

MT 1440 *easy*



MT SERIES PREMIERE CONSTRUCTION telescopic handler



KEY FEATURES

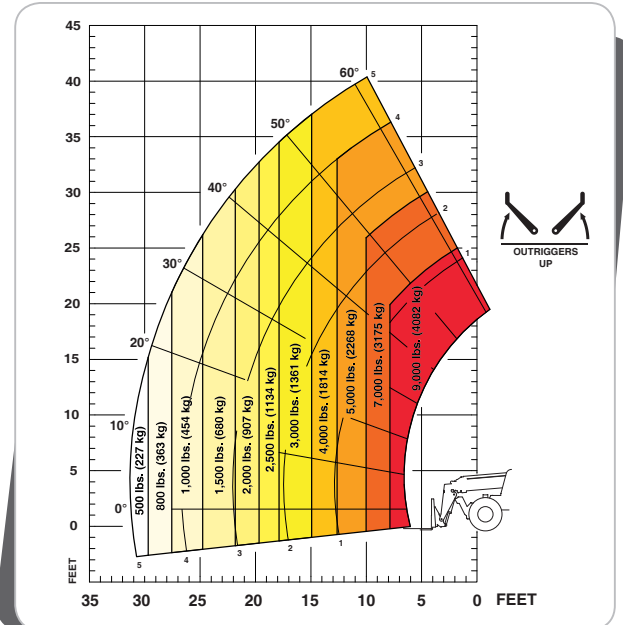
- > Deutz 74 HP (55.4 kW) Final Tier IV Engine
- > 9,000 lbs. (4082 kg) Capacity
- > 44 ft. 4 in (13.53 m) Lift Height
- > No DEF requirements
- > Standard Unit with Enclosed Cab with Vinyl Seat, Heat and optional A/C
- > Standard Stabilizers
- > Frame Leveling \pm 10 Degrees
- > JSM Joystick Controls
- > 4-Wheel Drive / 4-Wheel Steer
- > Variety of Attachments



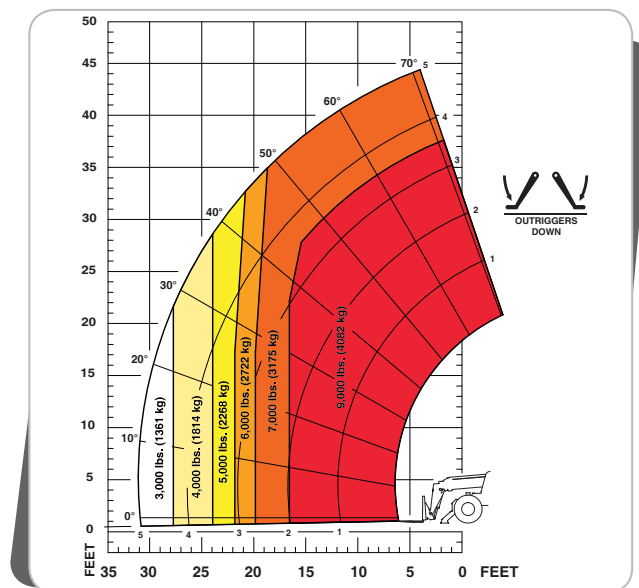
MT 1440 EASY CONSTRUCTION TELESCOPIC HANDLER SPECIFICATIONS

MT 1440 EASY		
KEY PERFORMANCE	Lift Capacity (kg)	9,000 lbs. (4082)
	Maximum Lift Height (m)	44'4" (13.53 m)
	Capacity at Maximum Lift Height with Stabilizers (kg)	7,000 lbs. (3175)
	Maximum Forward Reach (m)	31'0" (9.46 m)
	Capacity at Maximum Forward Reach with Stabilizers (kg)	3,000 lbs. (1361)
	Break-out Force with Bucket (daN)	16,636 lb/f (7,400)
ENGINE	Manufacturer	Deutz
	Aspiration	Turbocharged
	Power (kW)	74 hp (55.4)
	Model	TD 3.6L Tier IV
	Maximum Torque (Nm) @ 1400 rpm	243.39 ft.-lbs. (330)
COMPONENTS	Transmission	Powershuttle, 4 Wheel Drive
	Maximum Travel Speed (km/hr)	15.5 mph (25)
	Selective Steering	2-Wheel, 4-Wheel, Crab
	Service Brake	Multiple disc brakes, hydraulic front and rear axles
	Parking Brake	Automatic & Manual
HYDRAULIC SYSTEM	Pump Type	Dual Gear
	Total Capacity (L/min)	45 gpm (170)
	System Pressure (bar)	3916 psi (270)
GENERAL SPECIFICATIONS	A. Front Wheel Center to Carriage (m)	6'2" (1.90)
	B. Wheelbase (m)	10'0" (3.07)
	C. Rear Wheel Center to Rear Face (m)	3'9" (1.16)
	D. Length - Without Forks (m)	20'2" (6.13)
	E. Ground Clearance (mm)	14.4" (367)
	F. Overall Width of Cab (m)	35" (0.89)
	H. Overall Width (to Outside of Tires) (m)	7'9" (2.37)
	I. Overall Width (Stabilizers Lowered) (m)	12'6" (3.79)
	J. Overall Height (m)	8'1" (2.45)
	Approximate Weight (kg)	23,931 lbs. (10,855)
	Outside Turning Radius (m)	13'1" (3.99)
	Standard Tires	440/80-24
CAPACITIES	Fuel Tank Capacity (L)	37 gal. (140)
	Hydraulic Oil (L)	35.6 gal. (135)

Machine on Tires with Forks



Machine on Stabilizers with Forks



DIMENSIONS REFERENCE DIAGRAMS

