



## EQUIPMENT NORTH

Robust construction materials and minimalist design make Equipment North's Minerscopic 10055 an underground workhorse.

# Minerscopic 10055

## Underground Telescopic Forklift



Unit is fully mine-approved in its standard configuration - no additional testing is necessary



With 10,000 lbs capacity and 55' of reach, the Minerscopic 10055 is up to any task.

### BUILT TO LAST

Minimalist design is the key to making the Minerscopic 10055 easy to service. Eliminating electronics allows your service technicians to perform repairs on site, while rugged all-steel construction and reduces downtime caused by damage to flimsy fiberglass and plastic components.

### KEY FEATURES

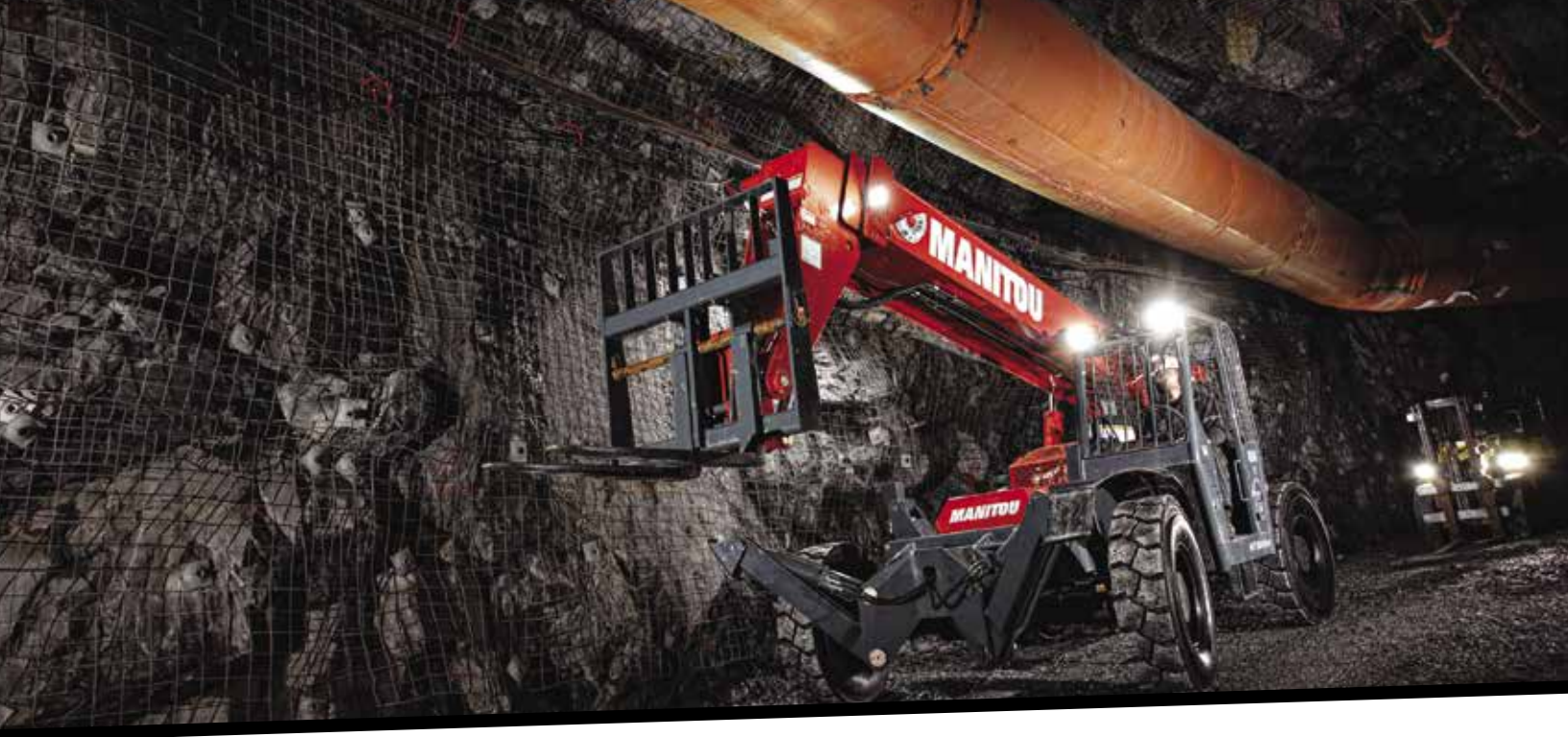
- ◉ Mine-approved triple-redundant braking system
- ◉ Mining-tire equipped
- ◉ High luminosity LED lighting
- ◉ Fire-Resistant Wiring
- ◉ Certified ROPS/FOPS

### COMPACT SIZE

Intended for use in ramp-access mines or to be disassembled and slung to the working level, the Minerscopic 10055 boasts 10,000 lbs lifting capacity, 55' of vertical reach and over 40' of forward reach.

### AVAILABLE OPTIONS AND ACCESSORIES

- ◉ Cab with glass or steel grill enclosure
- ◉ Collapsible manbasket with remote lock out
- ◉ Variety of hydraulic and fixed quick-attach jib booms
- ◉ Wide selection of forks and buckets

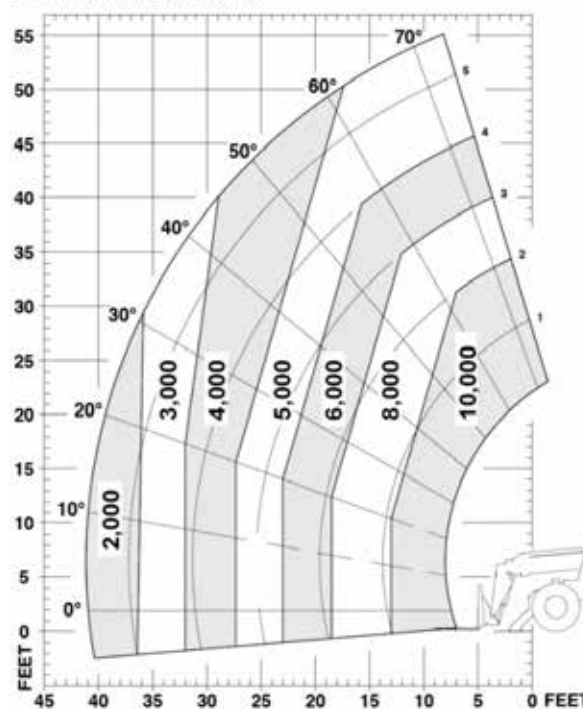


## SPECIFICATIONS

Engine Type	Water-cooled diesel
Engine Output	115 HP
Capacity	10,000 lbs
Max. Lift Height	55'0"
Max. Forward Reach	41'0"
Min. Turning Radius	13'8"
Ground Clearance	16"
Dimensions	8'6"H x 8'4"W x 21'4"L
Operating Weight	27,800 lbs
Service Brake	4-wheel, hydraulically actuated internal wet disc brake
Emergency Brake	Spring-applied, hydraulic release (SAHR) on front axle
Driveline Brake	Mico SA/HR enclosed disc on driveline
Tires	1220 x 20 mining tire
Drive	4-wheel drive
Transmission	Dana 3-speed powershift
Max Travel Speed	18.8 mph (30.3 km/h)

## LOAD CHART

Machine on stabilizers with forks Metric



*Note: Specifications subject to change without notice.*

### SUDBURY

269 Fielding Rd, Lively  
ON Canada P3Y 1L8  
P 705.682.1120 F 705.682.2728

### TIMMINS

99 Lidanri Court, Timmins,  
ON Canada P4R 0K1  
P 705.360.5145 F 705.360.5199

Toll Free 1.888.385.8559  
[www.equipmentnorth.com](http://www.equipmentnorth.com)