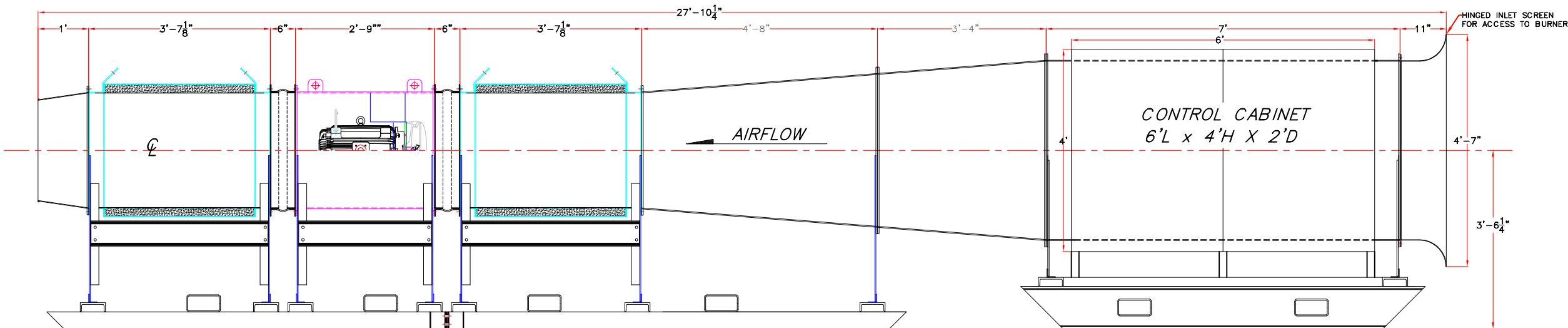
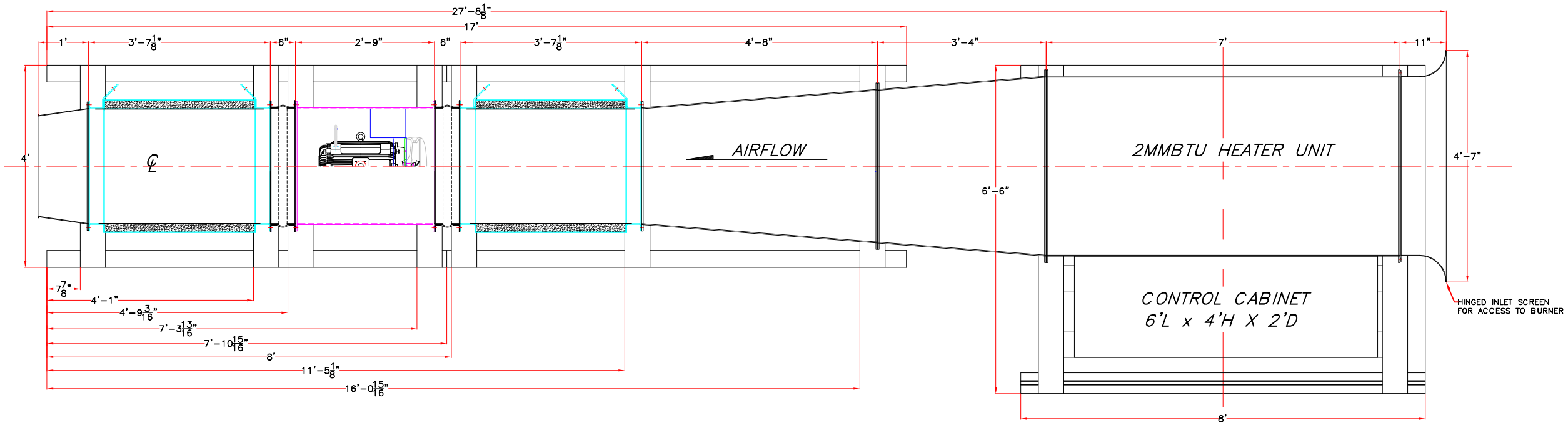


CONCEPTUAL DESIGN

THIS DRAWING AND ALL DATA THEREIN IS THE PROPERTY OF HURLEY VENTILATION TECHNOLOGIES INC. THIS DRAWING IS PROPRIOTORY INFORMATION AND IS NOT TO BE REPRODUCED OR COPIED WITHOUT WRITTEN CONSENT. THIS DRAWING SHALL BE RETURNED UPON DEMAND.

MATERIAL LIST

ITEM #	QTY	DESCRIPTION	CUT SIZE	UNIT WEIGHT (Lbs)	TOTAL WEIGHT (Lbs)
1	1	Ø42.25" INLET BELL & SCREEN	0'-11"	TBA	TBA
2	1	Ø42.25" NATURAL GAS HEATER	6'-0"	TBA	TBA
3	1	Ø42.25 - Ø36" INLET CONE	3'-4"	TBA	TBA
4	1	Ø36" - Ø27.25" INLET CONE	4'-8"	TBA	TBA
5	1	Ø27.25" SILENCER	3'-7 1/8"	TBA	TBA
6	1	Ø27.25" EXPANSION JOINT	0'-6"	TBA	TBA
7	1	Ø27.25" AXIAL FAN	2'-9"	TBA	TBA
8	1	Ø27.25" EXPANSION JOINT	0'-6"	TBA	TBA
9	1	Ø27.25" SILENCER	3'-7 1/8"	TBA	TBA
10	1	Ø27.25" - 24" ADAPTER	1'-0"	TBA	TBA
11	1	SKIDBASE	17' X 4'	TBA	TBA
ADD 75 Lbs PER PALLET TO SHIPPING WEIGHT AS REQUIRED				SHIPPING WEIGHT (Lbs)	TBA



VANE AXIAL FAN

FAN HOUSING:

VANEAXIAL FAN MODEL 27.25-17-3600 TYPE 1000 BLADES, ARRANGEMENT 4 COUNTER-CLOCKWISE ROTATION, HORIZONTAL AIRFLOW, DIRECT DRIVE C/W - EXTENDED BEARING GREASE LINES TO OUTSIDE OF CASING.

FAN HOUSING IS DESIGNED WITH 1/4" 44W PLATE C/W FLANGES ROLLED FROM STEEL FLAT BAR, THAT IS CONTINUOUSLY WELDED TO THE CASING. THE HOUSING IS A LOW VIBRATION DESIGN THAT WHEN FITTED WITH ROTOR ASSEMBLY IS BALANCED TO THE ISO G2.5 REQUIREMENTS.

ROTOR ASSEMBLY:

ADJUSTABLE PITCH IMPELLER WITH A 17" SPHERICAL DIA. HUB, A356 CAST ALUMINUM ALLOY AIRFOIL BLADES (FULL BLADED). BLADES INDIVIDUALLY ADJUSTED WITH FAN AT REST BY REMOVING NOSE CAP AND LOOSENING BLADE LOCKNUTS. IMPELLER BALANCED IN ACCEPTANCE WITH ISO 1940 G2.5 BALANCE QUALITY SPUN 3003 H14 ALUMINUM AERODYNAMICALLY SMOOTH NOSE CAP.

ACCESSORIES:

- INLET BELL W/SCREEN
- ASSEMBLED W/ 1/2" BOLTS

PAINT SPECIFICATION:

TBA BY CLIENT

MOTOR SPECIFICATION:

- HI EFFICIENCY MOTOR
- 40HP @ 3600RPM
- 600VOLT / 60 / 3
- 324 TCZ FRAME
- SUPPLIED & MOUNTED BY HVT Inc.

FAN PERFORMANCE (PER FAN)

VOL (CFM)	SP (IN. WG)	TP (IN. WG)	BHP (HP)	RPM	ELEVATION (FT)	AIR TEMP (°F)	AIR DENSITY (LBS/FT³)
17500	-	-	40	3600	-	70	0.075



HURLEY VENTILATION TECHNOLOGIES INC.

EBC INC

GENERAL ARRANGEMENT

Ø27.25" AXIAL FAN W/ SILENCERS

DWG. No.	DESCRIPTION	DWG. No.	DESCRIPTION	DATE	REVISIONS AND ISSUES	DATE	REVISIONS AND ISSUES	DATE	REVISIONS AND ISSUES
				2016/02/09		2016/06/23		2016/02/09	

REV. A