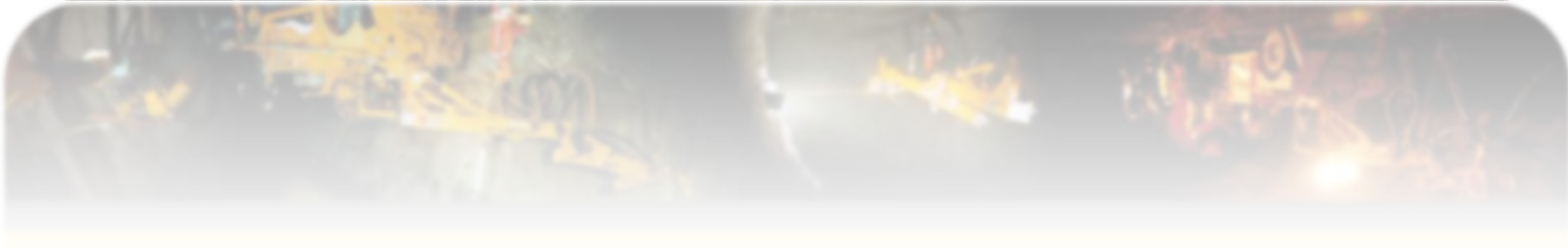


SPM 500

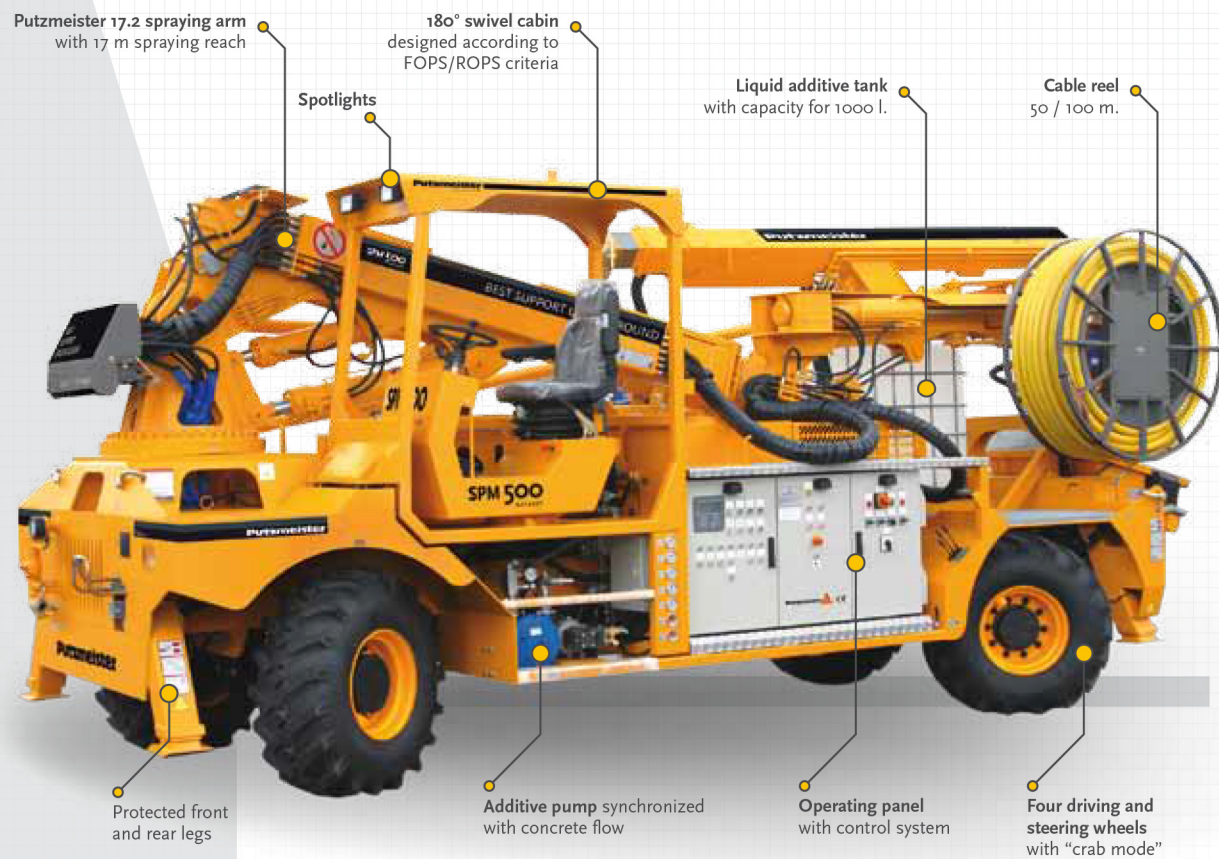
WETKRET

CONCRETE SPRAYING EQUIPMENT



SPM 500

WETKRET



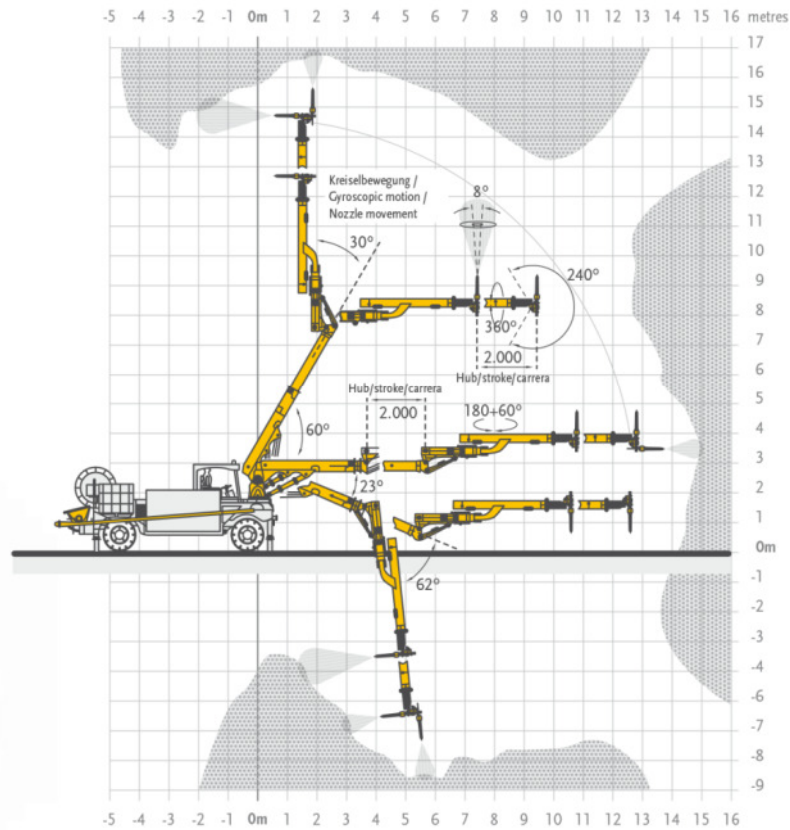
SPM 500

WETKRET

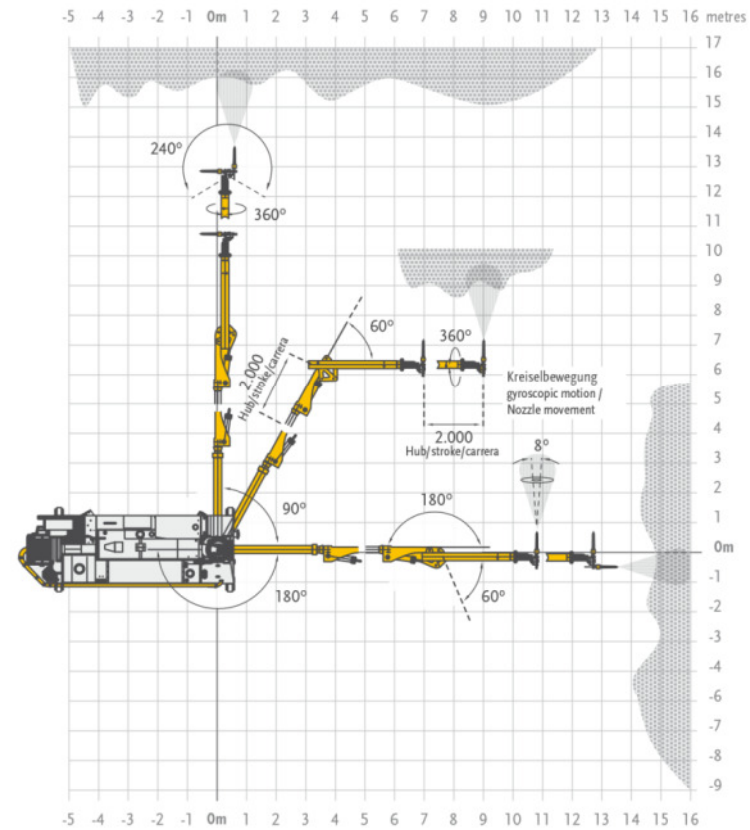
**THE SPM 500 WETKRET SERIES HAS
PROVEN ITS EFFICIENCY AND RELIABILITY
IN A LARGE NUMBER OF PROJECTS ALL
OVER THE WORLD**



SPRAYING ARM REACH DIAGRAMS

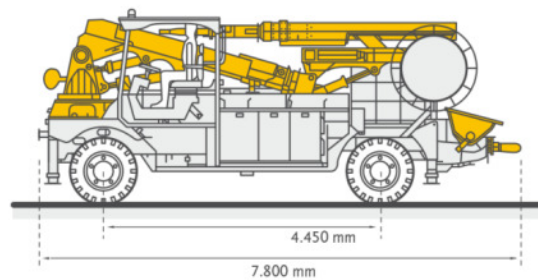


VERTICAL SPRAYING REACH

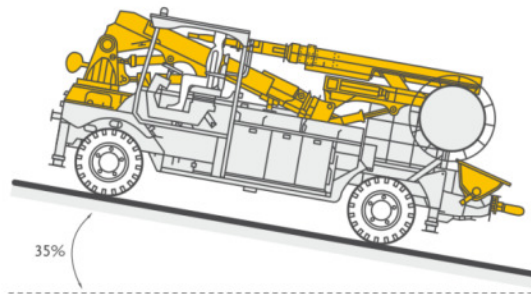
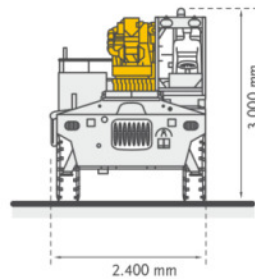


HORIZONTAL SPRAYING REACH

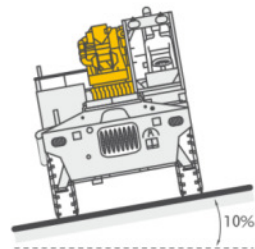
DIMENSIONS AND TURNING RADIUS



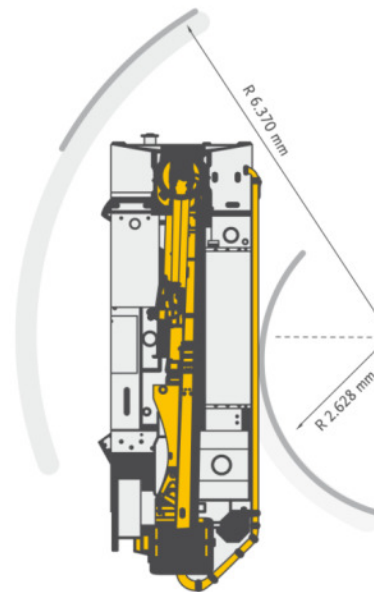
TRANSPORT DIMENSIONS



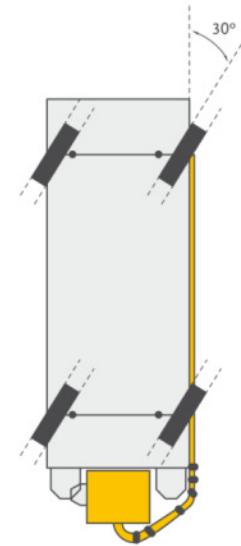
MAXIMUM LONGITUDINAL
GRADIENT WHILE DRIVING



MAXIMUM TRANSVERSE
GRADIENT WHILE DRIVING



TURNING RADIUS



4-WHEEL STEERING
WITH CRAB MODE

Putzmeister:

CONCRETE SPRAYING TECHNOLOGY

For over 30 years Putzmeister has been designing, developing and producing concrete spraying equipment for mines and tunnels. The experience acquired over these years together with ongoing investment in research and development have made Putzmeister a leading company in this field of application. It is this experience and search for added value for our customer that makes us different.

The main components of Putzmeister concrete spraying equipment, spraying arm, concrete pump, chassis and control software are designed, developed and produced in-house in order to offer perfectly synchronized equipment tailored to our customer's needs and the toughest working conditions.